

LINKBASIC DATA CENTER **CABLE TRAY SOLUTIONS**





Suzhou Plant

In order to bring our products become the best choice for customers in each market, continuously surpass ourselves, and committed to the construction of a high level domestic and international marketing team, Linkbasic has regional sales representative office and distribution channels on six continents , we have rich resources, products and services, which can meet the demand of regional and global customers.Each member of team takes customer satisfaction as the goal, through close cooperation, enthusiasm, and thoughtful service to win customer recognition, all these measures will drive the long-term development of Linkbasic, to provide reliable and high quality service for users from different countries and regions.

No matter what phase you are , from assessing your requirements to the implementation of new network communication, the Linkbasic's professional staff can offer the help for every step of the whole project , we will take all-round support as own duty.



COMPANY INTRODUCTION



20 YEARS

A professional total solution provider of integrated cabling, cabinet, fiber channel, aluminum alloy cabling tray, grid tray, etc.

Linkbasic Information Technology Co., Ltd. is a professional total solution provider of integrated cabling, cabinet, fiber channel, aluminum alloy cabling tray, grid tray, etc. Over the course of 20 years, we have been committed to voice transmission, data and video image signals to create a perfect copper cable and fiber optic data transmission solution.

Linkbasic fully committed to meet customer requirements, grasp the development trend of new technology, constant invest to research on new products, our innovation makes the expansion and application of products more efficient and more easy , as a solution provider drive operational excellence, Linkbasic's qualified researchers are constantly designing ,developing and providing innovative solutions for the customers all over the world, and superior advanced end-to-end solutions are helping businesses of all sizes fast safely transmit data on the communication network all the time.



Ningbo Plant

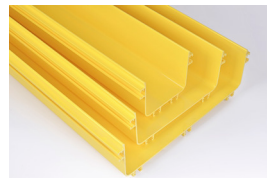
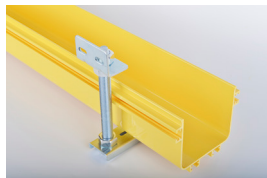
01



Fiber Channel

Fiber channel is a set of products which can protect and operate the fiber. Its basic components include: straight channel, horizontal and vertical elbow, fiber optic exit, fittings and support.

Less construction time, flexible channel path configuration, to achieve protection to fast, flexible, comprehensive optical fiber.



Product advantages

01 Strong practicability

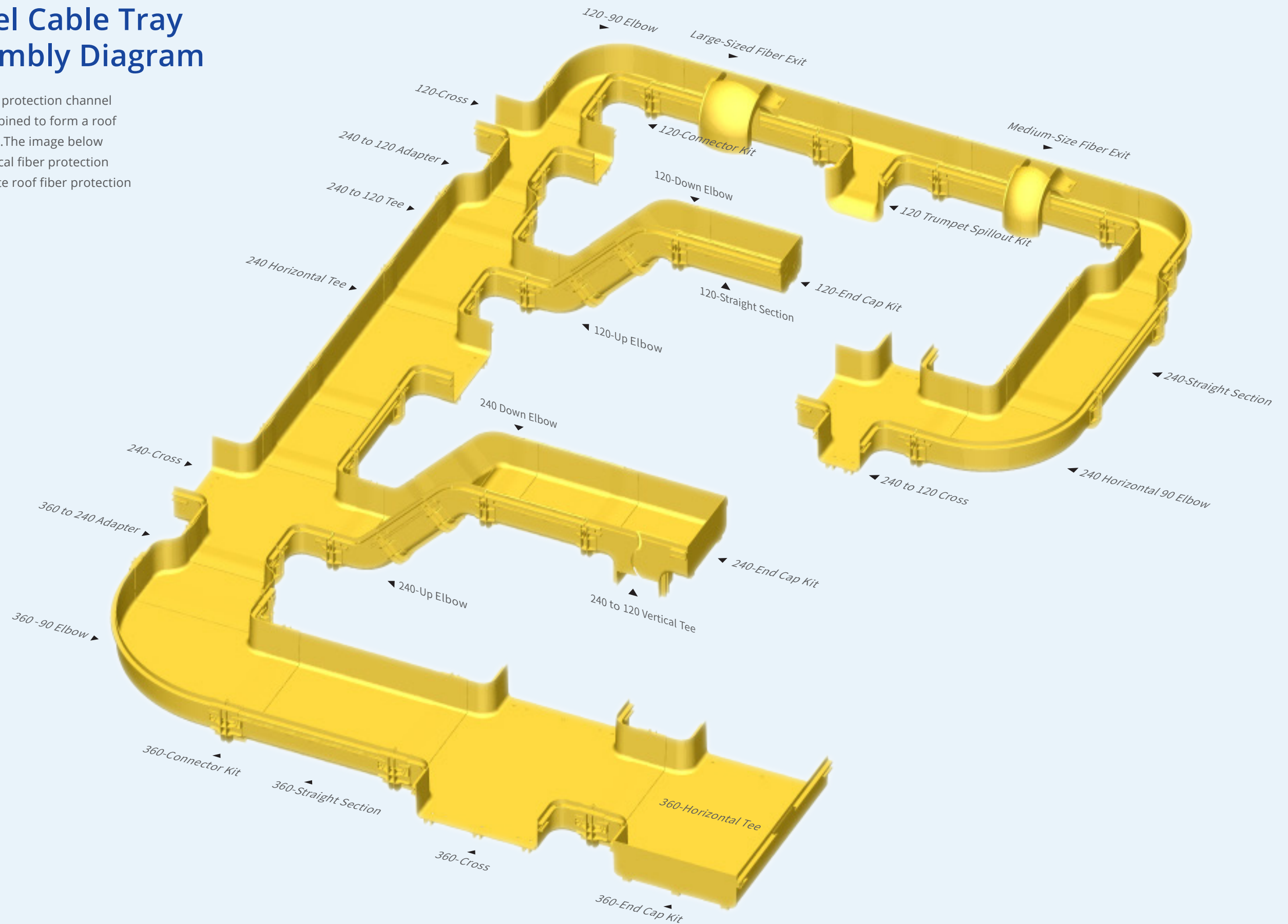
02 Save construction time

03 Flexible construction scheme

04 Comprehensive protection to optical fiber

Fiber Channel Cable Tray System Assembly Diagram

By using the switching port, the protection channel system of different sizes is combined to form a roof fiber protection channel system. The image below is composed of a variety of optical fiber protection channel components, a complete roof fiber protection channel system.



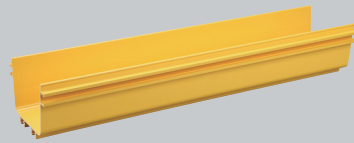
Straight Section

Product Description

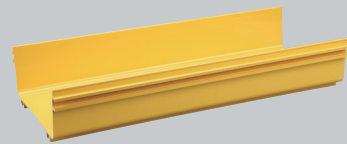
Used for cable horizontal through installation area, can cover and add accessories.

Material: pvc/abs

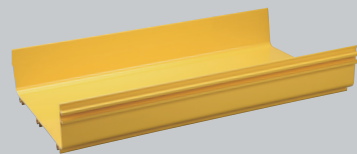
CDS120-ZC



CDS240-ZC



CDS360-ZC

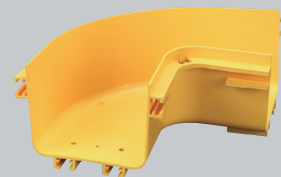


Order Info

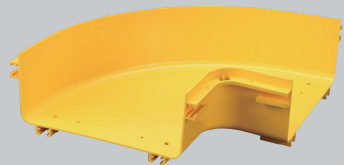
Name	Type	Specification
120 Straight Section	CDS120-ZC	H=100mm, W=120mm
240 Straight Section	CDS240-ZC	H=100mm, W=240mm
360 Straight Section	CDS360-ZC	H=100mm, W=360mm

90° Horizontal Elbow

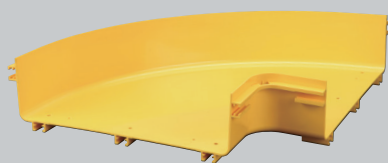
CDS120-WT



CDS240-WT



CDS360-WT



Product Description

Make straight channel bring a 90 degree horizontal bending.

Order Info

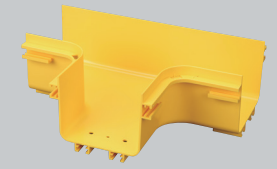
Name	Type	Specification
120 90° Horizontal Elbow	CDS120-WT	H=100mm, W=120mm
240 90° Horizontal Elbow	CDS240-WT	H=100mm, W=240mm
360 90° Horizontal Elbow	CDS360-WT	H=100mm, W=360mm

Horizontal Tee

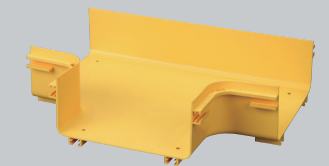
Product description

Make straight channel come into a 90 degree horizontal bending channel.

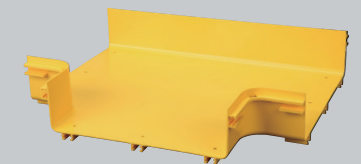
CDS120-3T



CDS240-3T



CDS360-3T

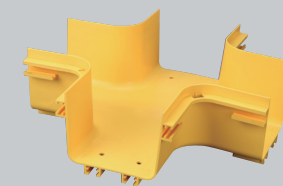


Order Info

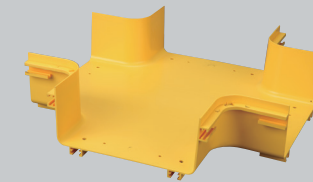
Name	Type	Specification
120 Horizontal Tee	CDS120-3T	H=100mm, W=120mm
240 Horizontal Tee	CDS240-3T	H=100mm, W=240mm
360 Horizontal Tee	CDS360-3T	H=100mm, W=360mm

Cross

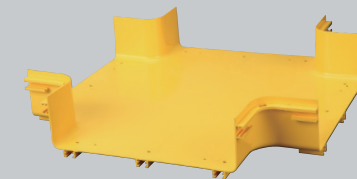
CDS120-4T



CDS240-4T



CDS360-4T



Product description

Connect the straight channel and make the straight channel come into a four - to - cross horizontal channel through two corners.

Order Info

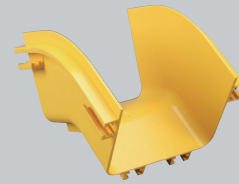
Name	Type	Specification
120 Cross	CDS120-4T	H=100mm, W=120mm
240 Cross	CDS240-4T	H=100mm, W=240mm
360 Cross	CDS360-4T	H=100mm, W=360mm

45° Down Elbow

Product Description

Connect the straight channel and make the straight channel come into a 45 degree downward curved channel, Make the 45 degree Angle up to change the horizontal direction.

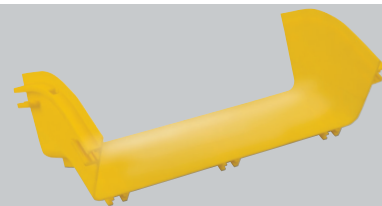
CDS120-XWT



CDS240-XWT



CDS360-XWT

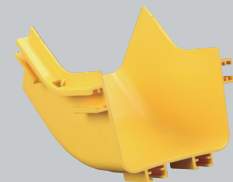


Order Info

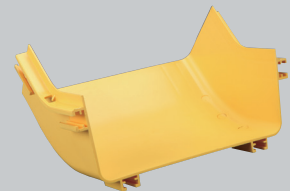
Name	Type	Specification
120 45° Down Elbow	CDS120-XWT	H=100mm,W=120mm
240 45° Down Elbow	CDS240-XWT	H=100mm,W=240mm
360 45° Down Elbow	CDS360-XWT	H=100mm,W=360mm

45° Up Elbow

CDS120-SWT



CDS240-SWT



CDS360-SWT



Product Description

Connect the straight channel and make the straight channel come into a 45 degree upward curved channel, Make the 45 degree Angle down to change the horizontal direction.

Order Info

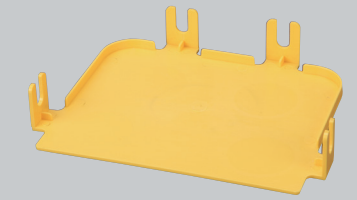
Name	Type	Specification
120 45° Up Elbow	CDS120-SWT	H=100mm,W=120mm
240 45° Up Elbow	CDS240-SWT	H=100mm,W=240mm
360 45° Up Elbow	CDS360-SWT	H=100mm,W=360mm

End Cap Kit

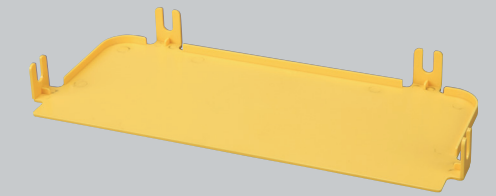
Product Description

Used to seal or open channel ports.

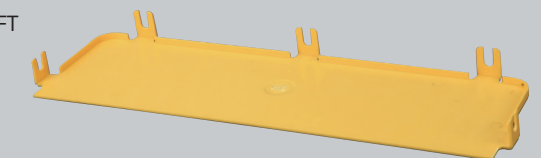
CDS120-FT



CDS240-FT



CDS360-FT

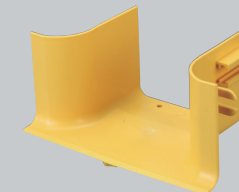


Order Info

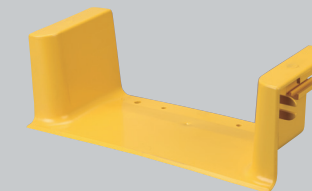
Name	Type	Specification
120 End Cap Kit	CDS120-FT	H=100mm,W=120mm
240 End Cap Kit	CDS240-FT	H=100mm,W=240mm
360 End Cap Kit	CDS360-FT	H=100mm,W=360mm

Special Functional Part

CDS120-WN-3T



CDS240-WN-3T



Product Description

Connect straight channel to make a 90 degree horizontal bending channel.

Order Info

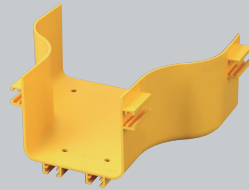
Name	Type	Specification
120 Universal Three Links	CDS120-WN-3T	H=100mm
240 Universal Three Links	CDS240-WN-3T	H=100mm

Special Functional Part

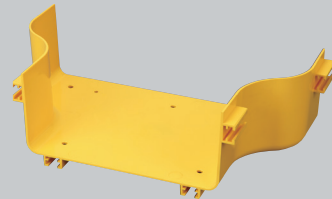
Product Description

A tool to connect different diameter channels.

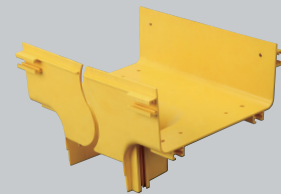
CDS240-Z120



CDS360-Z240



CDS240-Z120-CZ3T

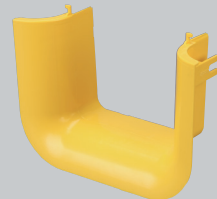


Order Info

Name	Type	Specification
240 to 120 connector part	CDS240-Z120	H=100mm
360 to 240 connector part	CDS360-Z240	H=100mm
240 to 120 vertical reducing tee	CDS240-Z120-CZ3T	H=100mm

Special Functional Part

CDS120-LBK



Product Description

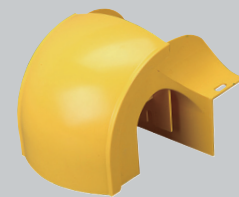
The pipe socket is the components applied to limit the bending radius to 50MM when there is a straight channel, three-link channel or channel reducing.

The outlet is suitable for all grooves, 90MM or 130MM removable no-hose installation.

CDS-CXK-SP90



CDS-CXK-SP130



Order Info

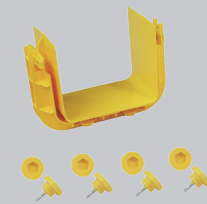
Name	Type	Specification
120 Pipe Socket	CDS120-LBK	H=100mm
90 Fiber Outlet	CDS-CXK-SP90	H=100mm
130 Fiber Outlet	CDS-CXK-SP130	H=100mm

Junction

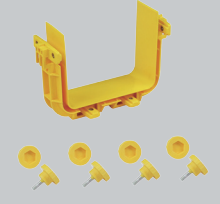
Product Description

It can also be tighten or remove bolts by hand in case of no tool, which can be used to splice the two parts quickly.

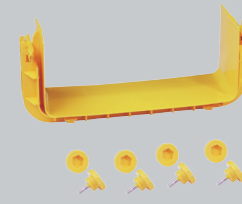
CDS120-ZJ-B



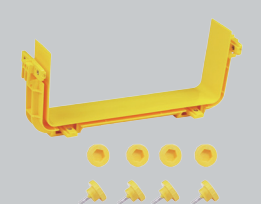
CDS120-ZJ-C



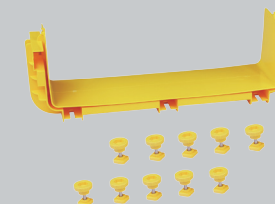
CDS240-ZJ-B



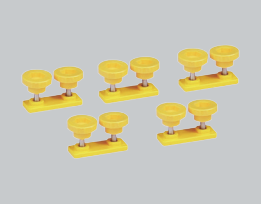
CDS240-ZJ-C



CDS360-ZJ-A



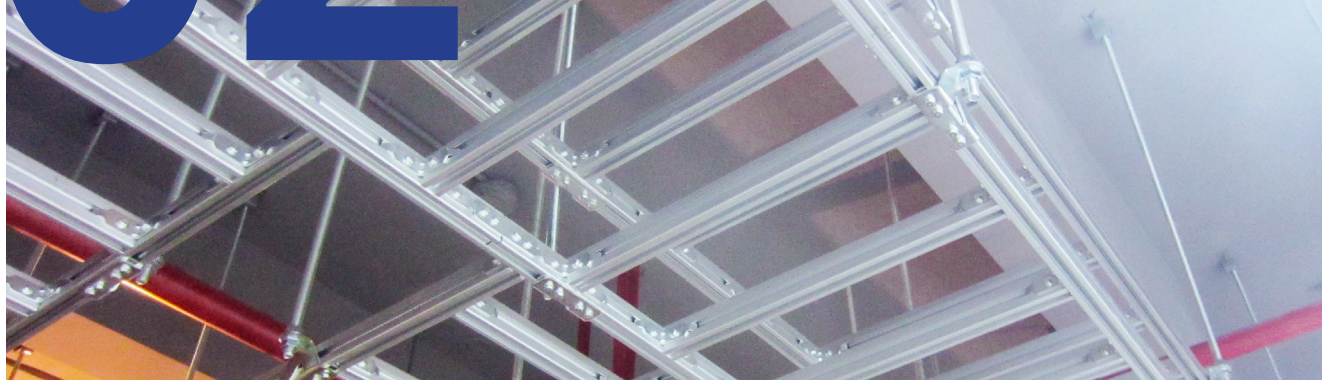
CDS360-ZJ-D



Order Info

Name	Type	Specification
120 Connecting Pieces B	CDS120-ZJ-B	H=100mm, W=120mm
120 Connecting Pieces C	CDS120-ZJ-C	H=100mm, W=120mm
240 Connecting Pieces B	CDS240-ZJ-B	H=100mm, W=240mm
240 Connecting Pieces C	CDS240-ZJ-C	H=100mm, W=240mm
360 Connecting Pieces A	CDS360-ZJ-A	H=100mm, W=360mm
360 Connecting Pieces D	CDS360-ZJ-D	H=100mm, W=360mm

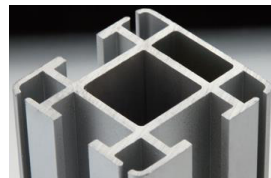
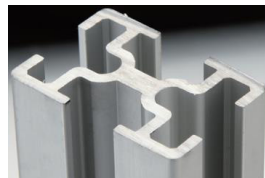
02



Aluminum Cable Ladder

Mainly used in all kinds of cable laying in communication IT room, network IT room, data IT room, cloud computer room and communication base station.

It has the features of beautiful appearance, strong strength, simple installation and convenient cable laying.



Product advantage

01
Beautiful appearance

02
Strong strength

03
Simple installation

04
Convenient cable laying

Aluminum Cable Ladder



Product Description

It is used in medium-sized IT room and large IT room
 DX series aluminium sectional dimension
 DXT DXA DXB DXC
 It can be divided into DXT,DXA ,DXB and DXC by thickness

Product Feature

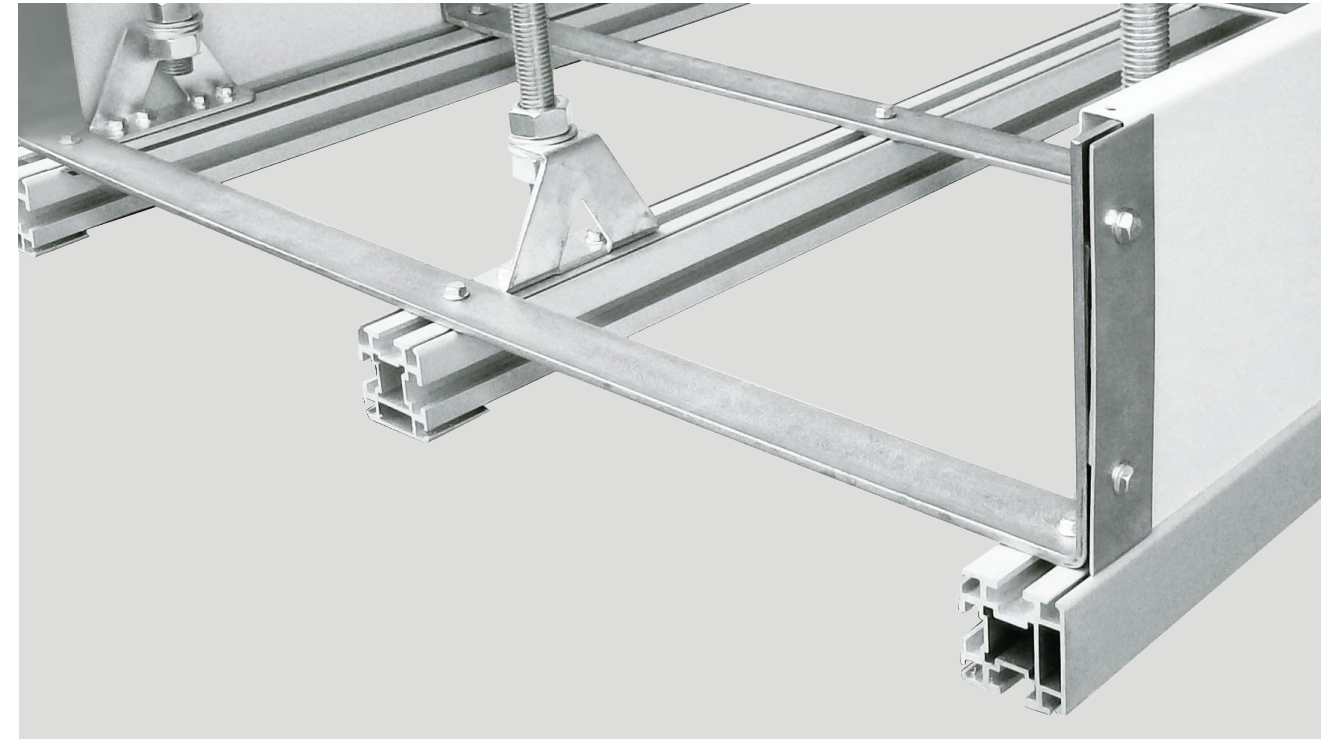
Beautiful design, rich variety, convenient installation, strong structure.



Order Info

Name	Type	Specification
300mm DX Aluminum Cable Ladder	XJL-300-DX	Bracket: DXC, Rungs: DXD
400mm DX Aluminum Cable Ladder	XJL-400-DX	Bracket: DXC, Rungs: DXD
600mm DX Aluminum Cable Ladder	XJL-600-DX	Bracket: DXC, Rungs: DXC
800mm DX Aluminum Cable Ladder	XJL-800-DX	Bracket: DXB, Rungs: DXC

Aluminum Cable Ladder

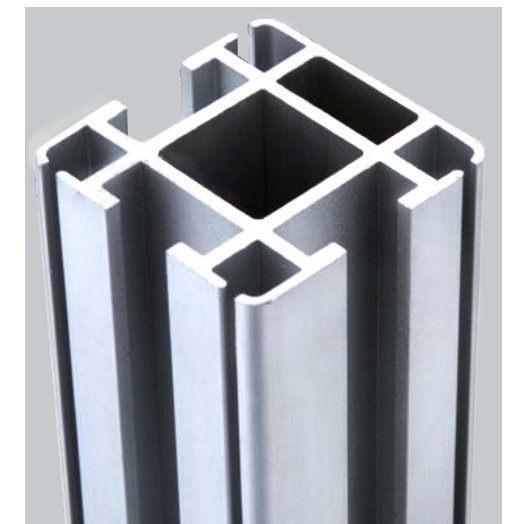


Product Description

It is used in medium-sized IT room and large IT room
 Bracket 50D aluminium profile sectional dimension
 Rungs 50D aluminium profile (Can be used as bottom edge or side half seal).

Product Feature

Beautiful design, rich variety, convenient installation, strong structure.



Order Info

Name	Type	Specification
600mm 50D Aluminum Cable Ladder	XJL-600-50D	Bracket : 50D, Rungs: 50D
800mm 50D Aluminum Cable Ladder	XJL-800-50D	Bracket : 50D, Rungs: 50D

03



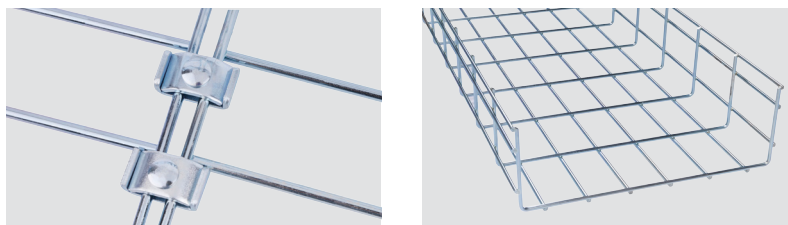
Wire Mesh Cable Tray

Mainly used in all kinds of cabling laying in communication IT room, power units and projects

Materials: carbon steel, stainless steel

Characteristic; Easy installation, ventilation cooling, reducing energy consumption, saving energy and convenient upgrading and maintenance

Surface treatment: the surface treatment of carbon steel is electro galvanizing, and the surface of stainless steel is treated with pickling and polishing.



03

Product advantage

01
Easy
installation

02
Ventilation
cooling

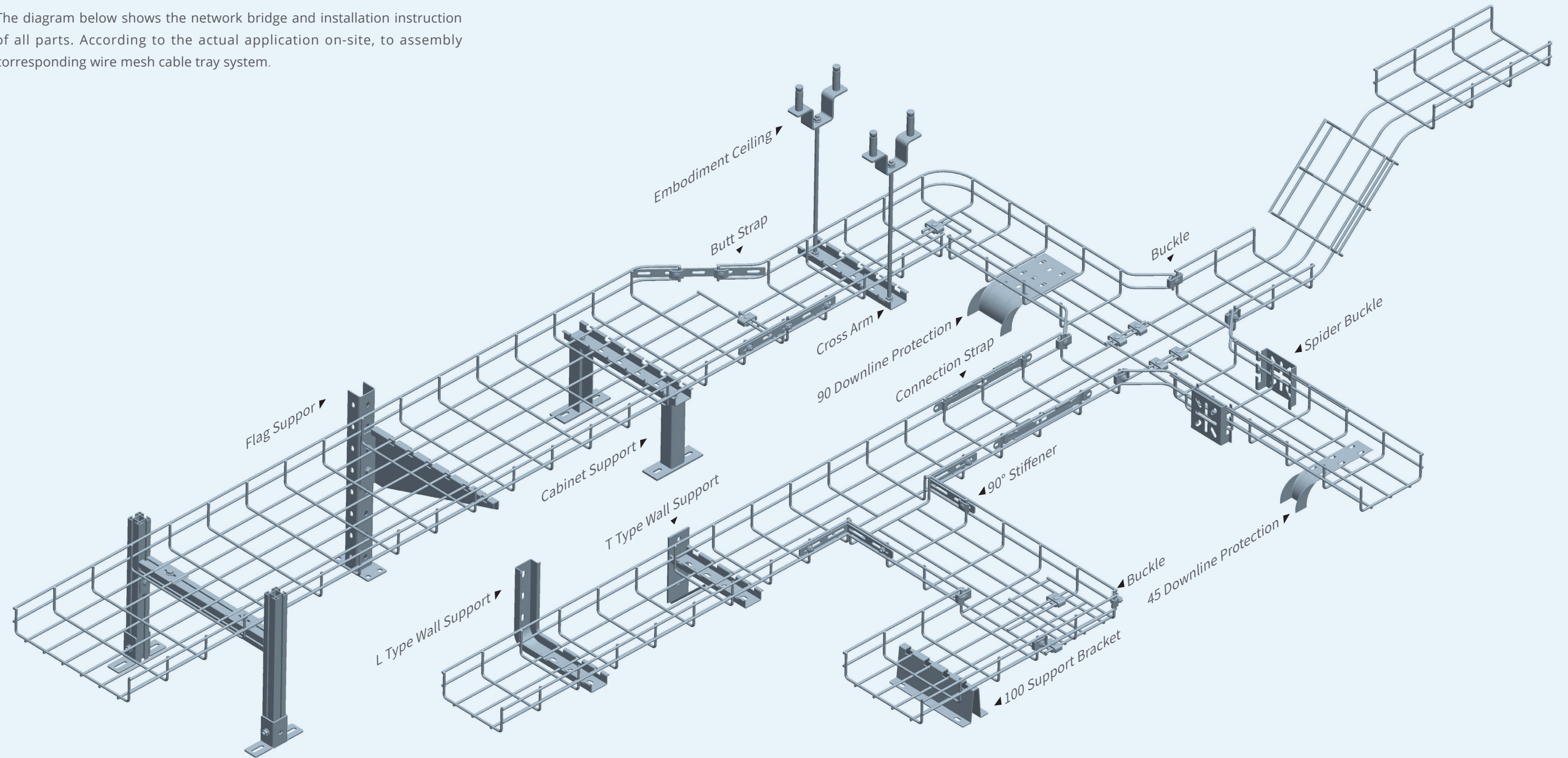
03
Reducing
energy
consumption

04
Saving
Energy

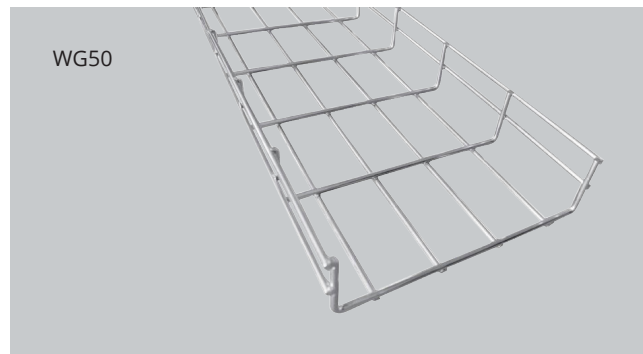
05
Convenient
upgrading &
maintenance

Wire Mesh Cable Tray Assembly Diagram

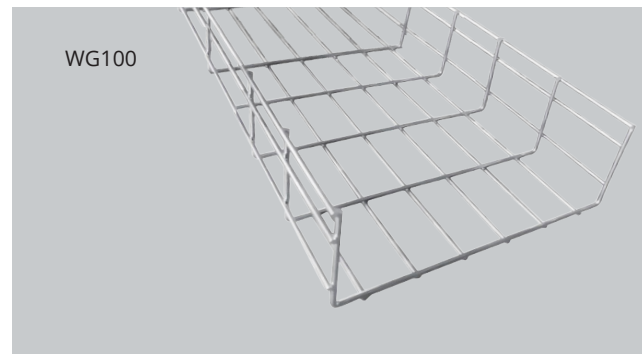
The diagram below shows the network bridge and installation instruction of all parts. According to the actual application on-site, to assembly corresponding wire mesh cable tray system.



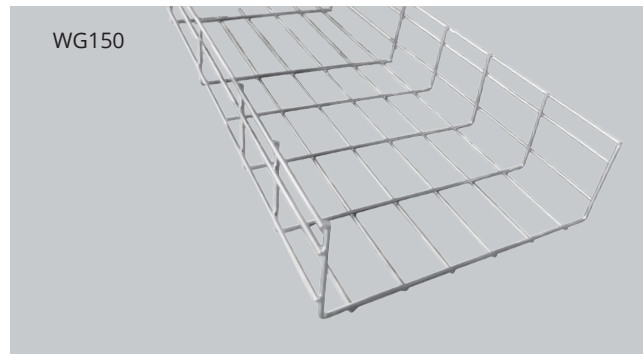
Wire Mesh Cable Tray



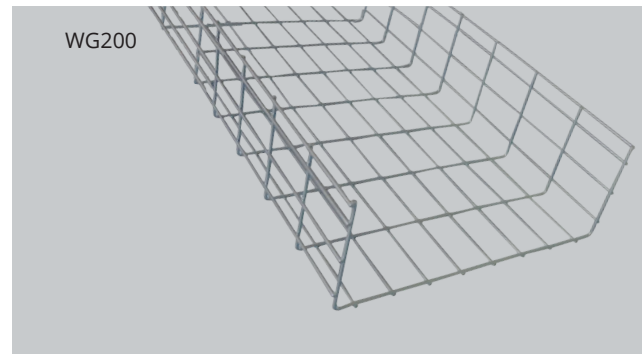
WG50



WG100



WG150

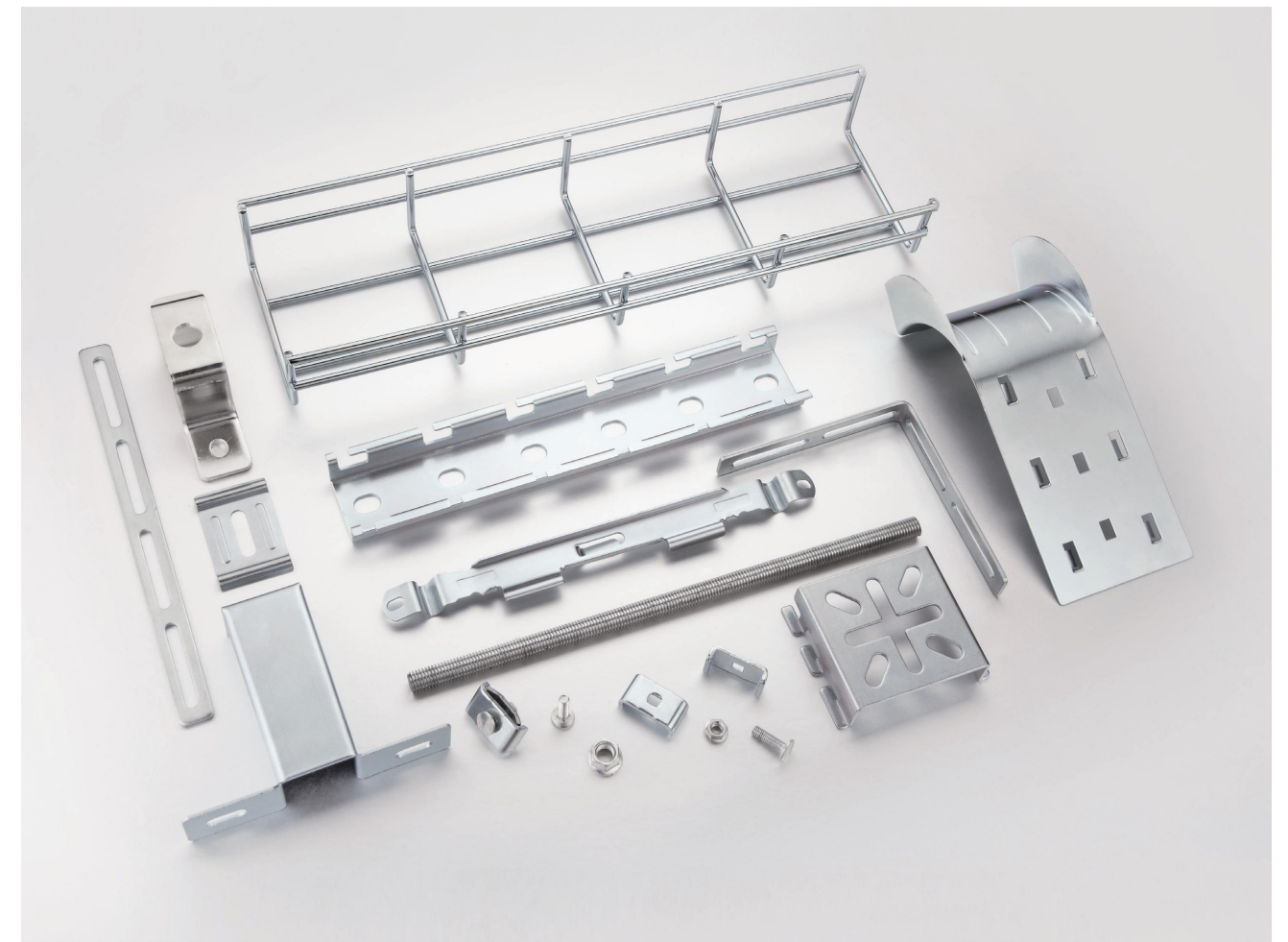


WG200

Order Info

Type	Height	Width	Diameter	Surface Treatment
WG50	50mm	50~100mm	5mm	Galvanized Carbon Steel / 304 Stainless Steel
WG100	100mm	100~800mm	5mm	Galvanized Carbon Steel / 304 Stainless Steel
WG150	150mm	300~500mm	5mm	Galvanized Carbon Steel / 304 Stainless Steel
WG200	200mm	400~600mm	5mm	Galvanized Carbon Steel / 304 Stainless Steel

Parts



Product Description

Mainly used in all kinds of cabling laying in communication IT room, power units and projects.

Materials: carbon steel, stainless steel.

Surface treatment: the surface treatment of carbon steel is electro galvanizing, and the surface of stainless steel is treated with pickling and polishing.



LINKBASIC INFORMATION TECHNOLOGY CO.,LTD

ADD: No.9. 3rd Binhai Road, Hangzhou Bay New zone,
Ningbo City, Zhejiang Province

TEL: +86-021-34635371

FAX: +86-021-34635378

Contact person: Ferdinand

Cell phone: 18616299602

Email: sale2@linkbasic.com

WWW.LINKBASIC.COM



— WeChat —